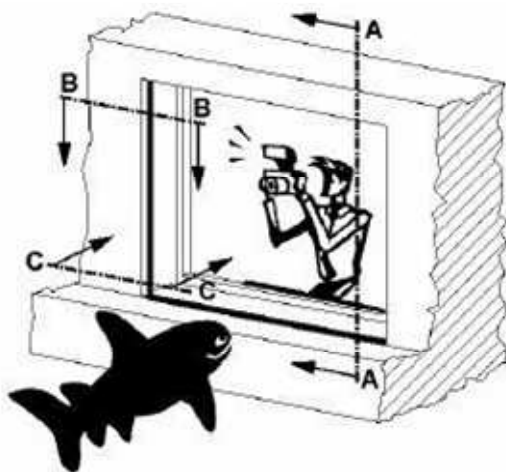


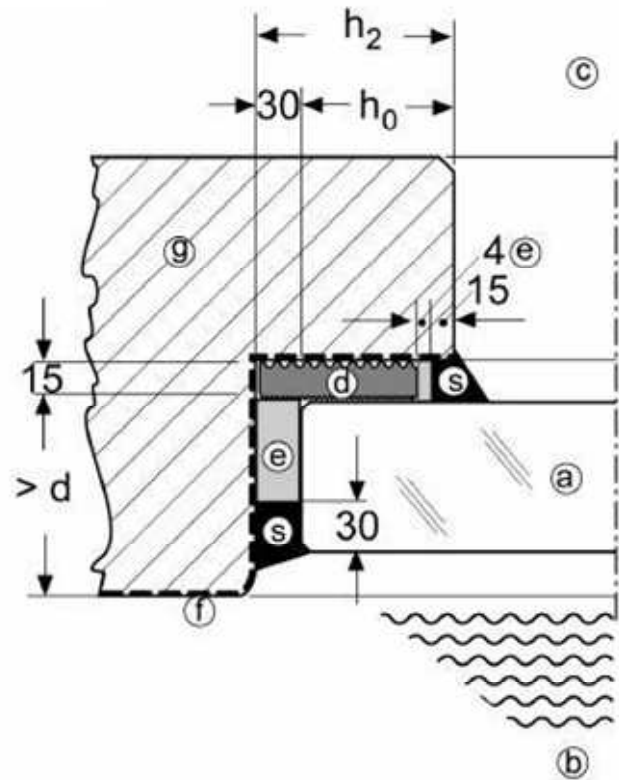
Aquarium Wall Glazing:
Recommended Installation Details for PMMA Blocks

- The supporting structure (reinforced concrete or steel girder construction) has to be dimensioned according to the structural engineer's specifications; our schematic drawing is not applicable.
- The given section drawings are valid for rectangular panels symmetrically supported along 4 edges; they may vary slightly depending on the dimensions and alignment of the PMMA blocks.
- All items are to be resistant to water and compatible with PMMA.
- The dimensions in mm are given as recommendations (see "Guidelines for Aquarium Partners").

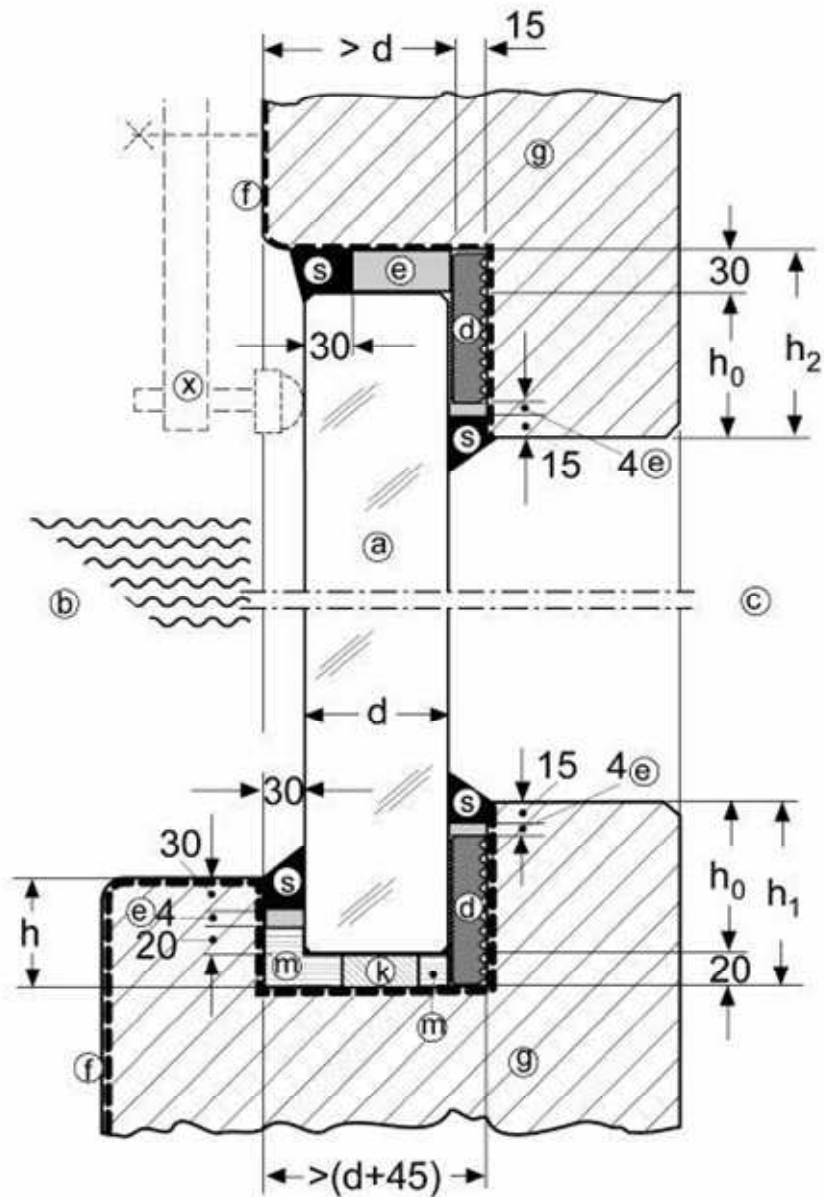
- (a) PMMA block
- (b) Water side
- (c) Visitor (air) side
- (d) Rubber stop gasket
- (e) Gap-filling PE foam
- (f) Epoxy coating
- (g) Reinforced concrete supporting structure
- (k) Shim for alignment (rigid plastic)
- (m) Floor leveling compound
- (s) Silicone rubber sealing section
- (x) Fixing device for installation and security



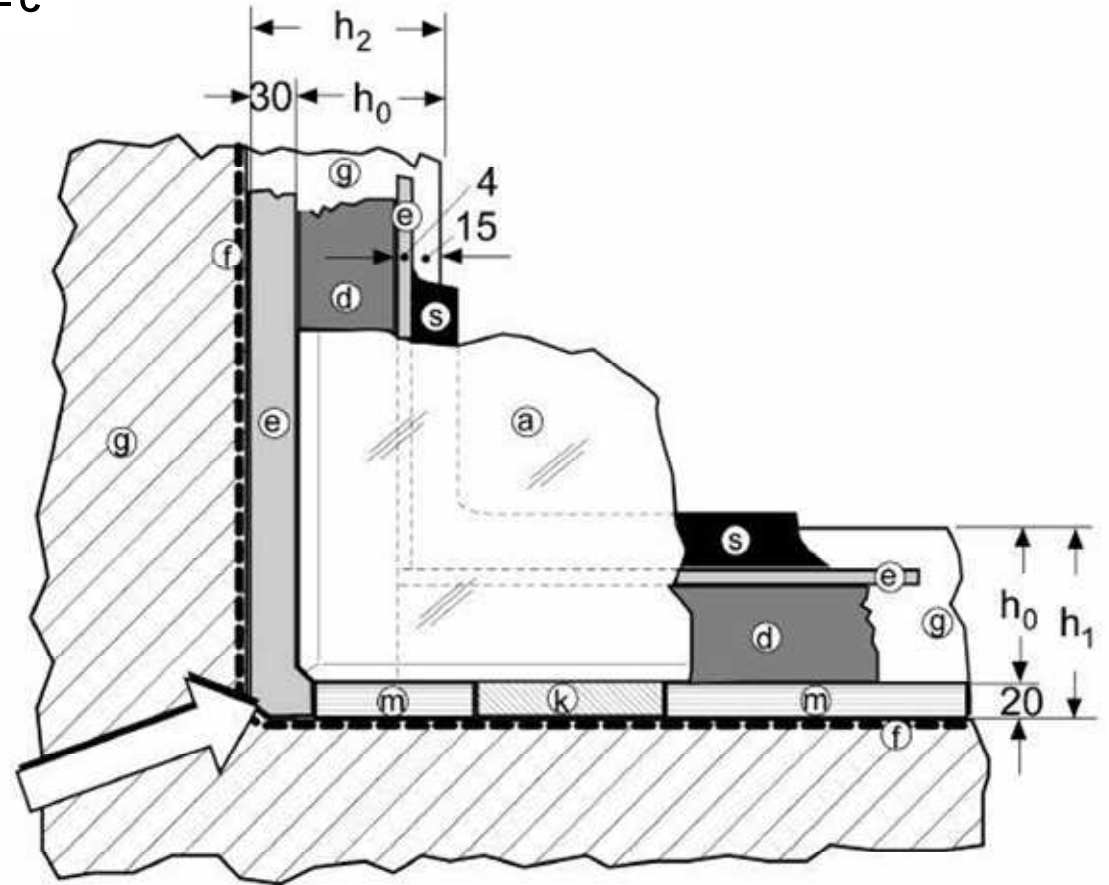
Section B – B



Section A – A



Section C – C



⇒ = PE foam (e) fills the whole width of the bottom corners
(floor leveling compound (m) stops at the vertical edge of the PMMA block).